

**The New Infinitas Palatal Clip extends the capabilities of the Infinitas Mini-implant System to incorporate Indirect mid-palatal anchorage for mesialisation and distalisation of molar teeth.**

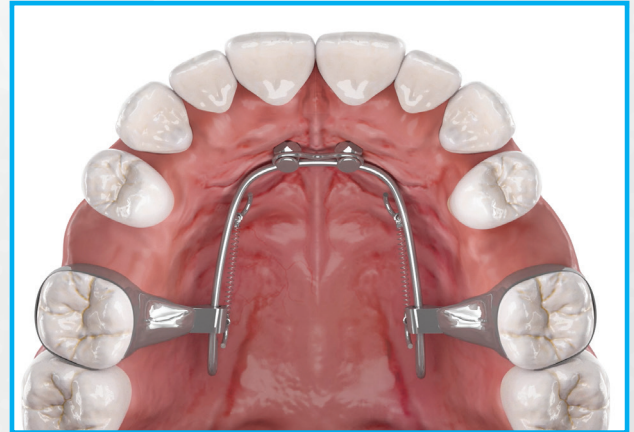
Our trained In-house Dental technicians (Studio 8) will create a palatal stent and appliance from a scan or impression, to be fit at the same appointment as the mini implants.

**Clinical Indications:**

- Mid-Palatal Insertion for Molar Distalisation and Mesialisation (Palatal Clip)
- Inter-maxillary Fixation/post-operative traction (IMF/IMT)

**Costs:**

- S804-0154 | Stent- Conventional with Analogue | £38.60
- S804-0160 | Infinitas Palatal Distaliser Appliance (Bi-lateral) | £189.00
- S804-0161 | Infinitas Palatal Mesialiser Appliance (Bi-lateral) | £189.00
- S804-0162 | Infinitas Palatal Distaliser Appliance (Uni-lateral) | £105.00
- S804-0163 | Infinitas Palatal Mesialiser Appliance (Uni-lateral) | £105.00
- DB10-0019 | Infinitas Mini implant 2.0 diameter 6mm Length (Round Head) | £61.65

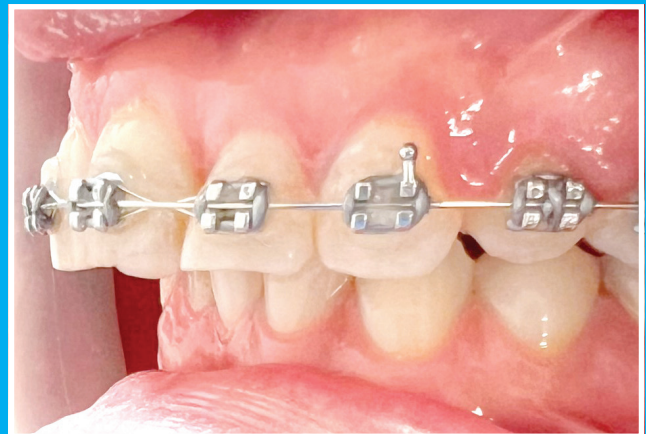


New Infinitas Mini Implant and PCS appliance from DB Orthodontics



**Clinical case example:**

Distalisation of the first molar teeth in the case below has been achieved with the Infinitas PCS appliance from DB Orthodontics.



Clinical photographs courtesy of Jack Acorn.

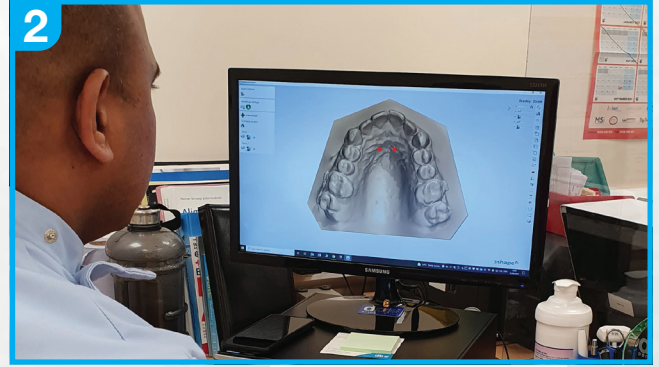
\*Infinitas Mini-implant Length 6mm Diameter 2mm Long Neck Round Head- Product code DB10-0019 are currently in Beta phase testing and are available with the clinicians understanding that they have not been through final regulatory approval



# CLINICAL WORKFLOW:



1 Scan patient (or take impressions) and send to Studio 8 with prescription - Insert separators at first appointment



2 Studio 8 dental technicians and clinicians communicate to validate position of the mini-implants. Studio 8 despatch mid-palatal stent and PCS appliance within 7 working days from validation.



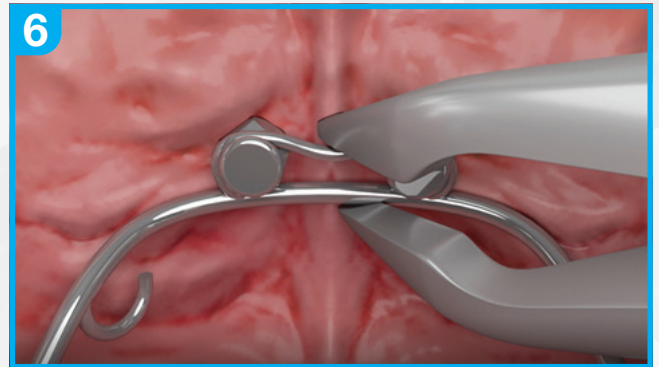
3 Position mid palatal stent



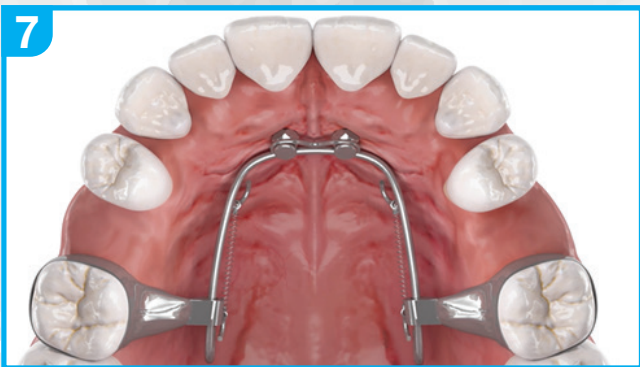
4 Place mid palatal mini-implants



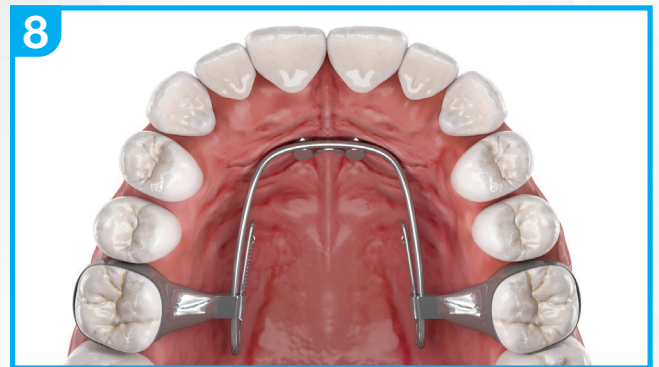
5 Position PCS appliance (mesialisation or distalisation) intra-orally



6 Crimp the clip around the undercut of the mid-palatal mini implants with a weingart



7 Activate the appliance with nickel titanium closing coils or elastomeric chain



8 Following activation maintain regular appointments to review clinical progress